

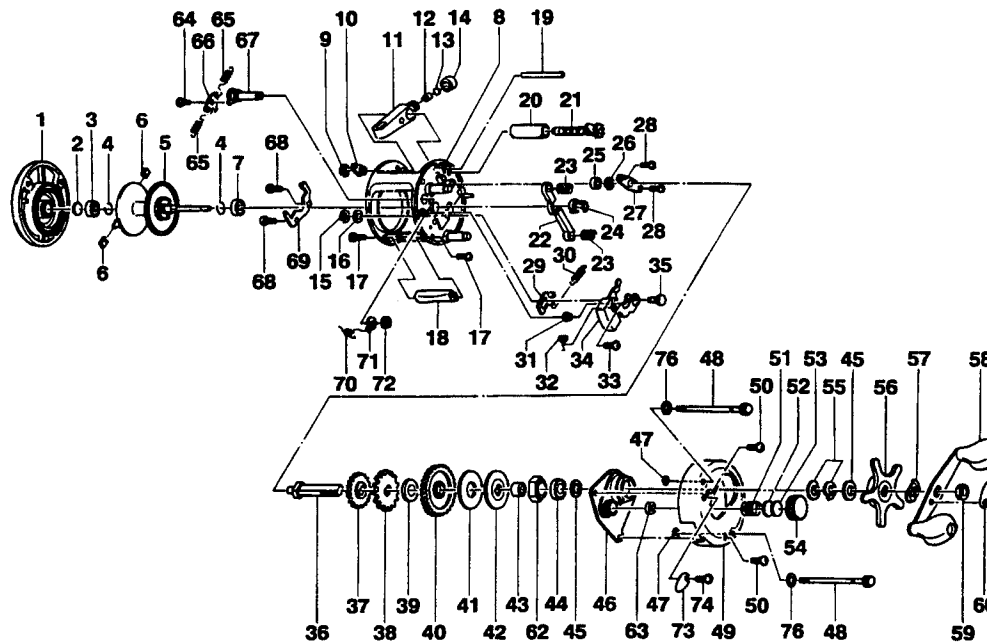
BROWNING® MIDAS 6WA

SPECIFICATIONS:

6 Bearings
 5.2:1 Gear Ratio
 10.5 oz. Weight
 200 yds./17 lb. Line Capacity

FEATURES:

1 piece die cast aluminum frame
 Thumb Button Spool Release
 Extra-wide, high-strength Gear System
 Machined Aluminum Spool
 Aluminum Side Covers
 Double Sealed stainless steel ball bearings
 Centrifugal Brake System
 Color - Gold



| Key No. | Part No. | Description | Price | Key No. | Part No. | Description | Price |
|---------|----------|--------------------------------|-------|---------|----------|-------------------------------|-------|
| 1 | XX323-05 | Left Side Cover Assy | 19.21 | 39 | QW111-01 | Washer - Ratchet | |
| 2 | XX038-02 | Spool Shaft Washer | .26 | 40 | JX012-01 | Drive Gear | |
| 3 | JX106-01 | Bearing - Spool Shaft | 6.33 | 41 | JX059-01 | Drag Disc | |
| 4 | JX080-01 | Clip Ring | .26 | 42 | JX045-01 | Drag "D" Washer | |
| 5 | XX321-02 | Spool Assy | 13.75 | 43 | ZW052-01 | Sleeve - One Way Bearing | |
| 6 | XX044-01 | Brake Shoe B | .26 | 44 | TW058-01 | Bearing - Crank Shaft (U) | |
| 7 | JX106-01 | Bearing - Spool Shaft | 6.33 | 45 | JX038-01 | Crank Shaft Washer | |
| 8 | XX301-02 | Frame Assy | 36.20 | 46 | JX066-02 | Crank Shaft Guide | |
| 9 | QW120-01 | E-Clip - Worm Shaft | .26 | 47 | JX073-01 | O-Ring - Thumb Screw | |
| 10 | JX067-01 | Bushing - Worm Shaft | .31 | 48 | XX374-01 | Thumb Screw Assy | |
| 11 | JX347-02 | Line Guide Carrier Assy | 2.32 | 49 | XX024-05 | Right Side Cover | |
| 12 | JX006-01 | Line Guide Pawl | 1.80 | 50 | QW123-05 | Right Side Cover Screw | |
| 13 | JX035-01 | Washer - Line Guide Pawl | .26 | 51 | JX105-01 | Spring - Tension Knob | |
| 14 | JX007-02 | Screw - Line Guide Carrier | .52 | 52 | QW032-02 | Washer - Spool Tension | |
| 15 | NX092-01 | E-Clip - Kick Lever Guide Post | .30 | 53 | JX082-01 | Washer - Cushion | |
| 16 | XX035-01 | Washer - Kick Lever Guide | .26 | 54 | XX033-01 | Spool Tension Knob | |
| 17 | JX050-01 | Screw - Thumb Rest | .31 | 55 | JX046-01 | Spring "D" Washer | |
| 18 | XX009-02 | Thumb Rest | .62 | 56 | XX355-02 | Star Drag Assy | |
| 19 | XX061-01 | Line Guide Carrier Guide | .98 | 57 | NX054-01 | Handle Washer | |
| 20 | XX016-01 | Worm Shaft Guide | .72 | 58 | JX318-02 | Handle Assy | |
| 21 | XX372-01 | Worm Shaft Assy | 7.42 | 59 | QW003-01 | Handle Nut | |
| 22 | JX025-01 | Pinion Yoke | .52 | 60 | QW034-03 | Handle Nut Cap | |
| 23 | JX040-01 | Yoke Spring | .21 | 61 | QW123-05 | Handle Nut Cap Screw | |
| 24 | JX011-01 | Pinion Gear | 5.36 | 62 | ZW063-01 | One Way Bearing | |
| 25 | XX017-01 | Bearing - Crank Shaft (L) | 5.20 | 63 | XX117-01 | Bearing - Tension Knob | |
| 26 | QW120-01 | E-Clip - Crank Shaft | .26 | 64 | XX125-01 | Screw - Clicker Pawl | |
| 27 | JX002-01 | Retainer - Crank Shaft | .57 | 65 | JX110-01 | Clicker Spring | |
| 28 | JX107-01 | Screw - Crank Shaft Retainer | .15 | 66 | JX114-01 | Clicker Pawl | |
| 29 | JX077-01 | Kick Lever | .57 | 67 | JX084-01 | Clicker Cam | |
| 30 | JX097-01 | Spring - Kick Lever | .15 | 68 | JX125-01 | Screw - Clicker Spring Holder | |
| 31 | JX068-01 | Bushing - Release Slider Guide | 1.08 | 69 | JX103-01 | Clicker Spring Holder | |
| 32 | JX104-01 | Spring - Release Slider | .21 | 70 | JX022-01 | Spring - Clicker Cam | |
| 33 | XX050-01 | Screw - Release Slider | .15 | 71 | JX041-01 | Click Cam Actuator | |
| 34 | JX339-02 | Release Slider Assy | 1.80 | 72 | JX075-01 | C-Clip | |
| 35 | JX102-01 | Post - Kick Lever Guide | .88 | 73 | JX109-02 | Click Lever | |
| 36 | JX008-01 | Crank Shaft | 2.88 | 74 | QW053-07 | Screw - Click Lever | |
| 37 | JX112-01 | O/S Drive Gear | .46 | 76 | JX121-01 | Washer - Thumb Screw | |
| 38 | JX083-01 | Trip Ratchet | .93 | | | | |

| | | | | | |
|-------------------------|------|---|-----------|---------------------|-----|
| MODEL INTRODUCED | 1996 | EFFECTIVE DATE OF PARTS LIST/DIAGRAM | Nov. 1996 | DISCONTINUED | N/A |
|-------------------------|------|---|-----------|---------------------|-----|

Prices subject to change without notice. Prices do not include postage and handling.

PLEASE ORDER BY PART NUMBER Zebco Division, Brunswick Corporation, Box 270, Tulsa, OK 74101, USA 918 831 8865